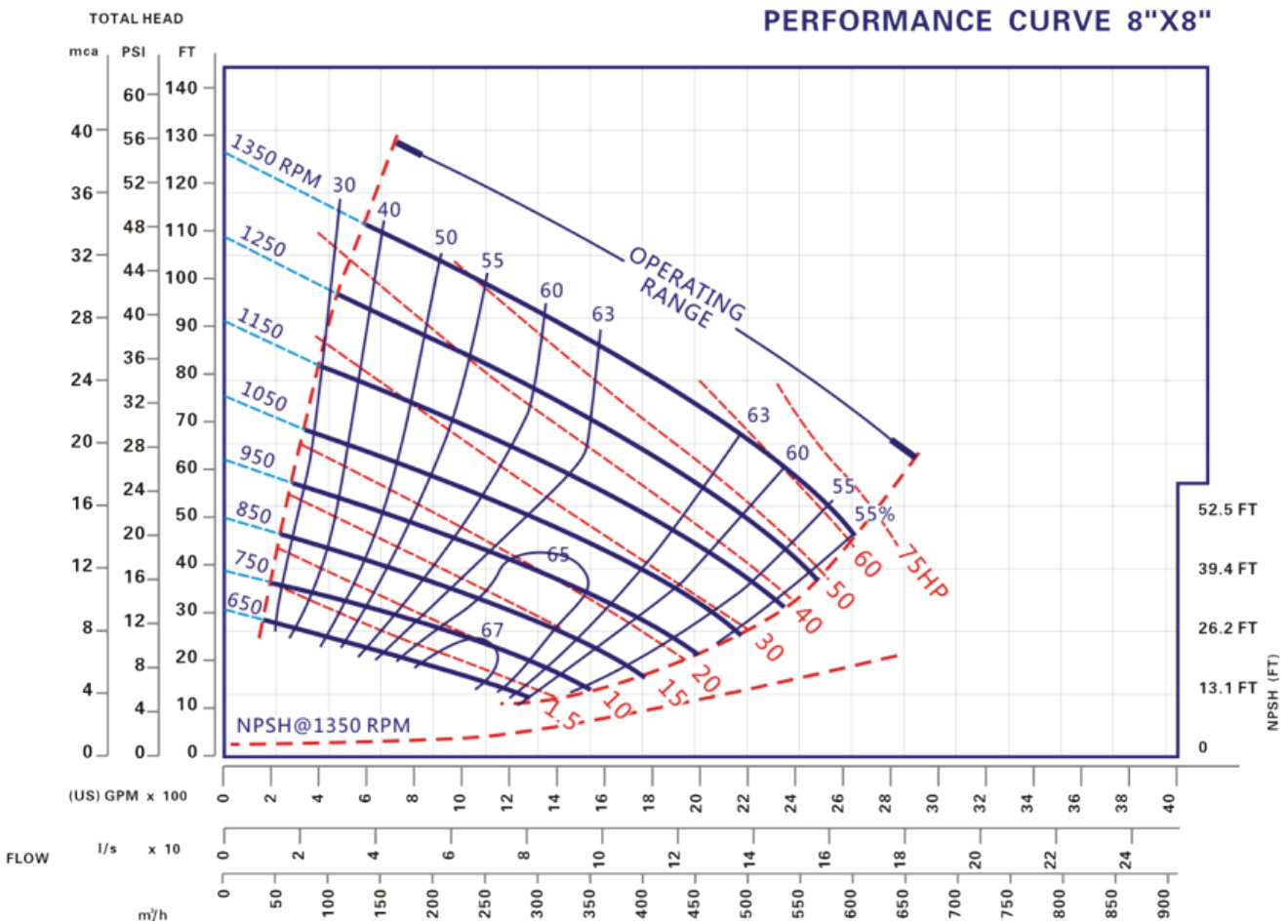
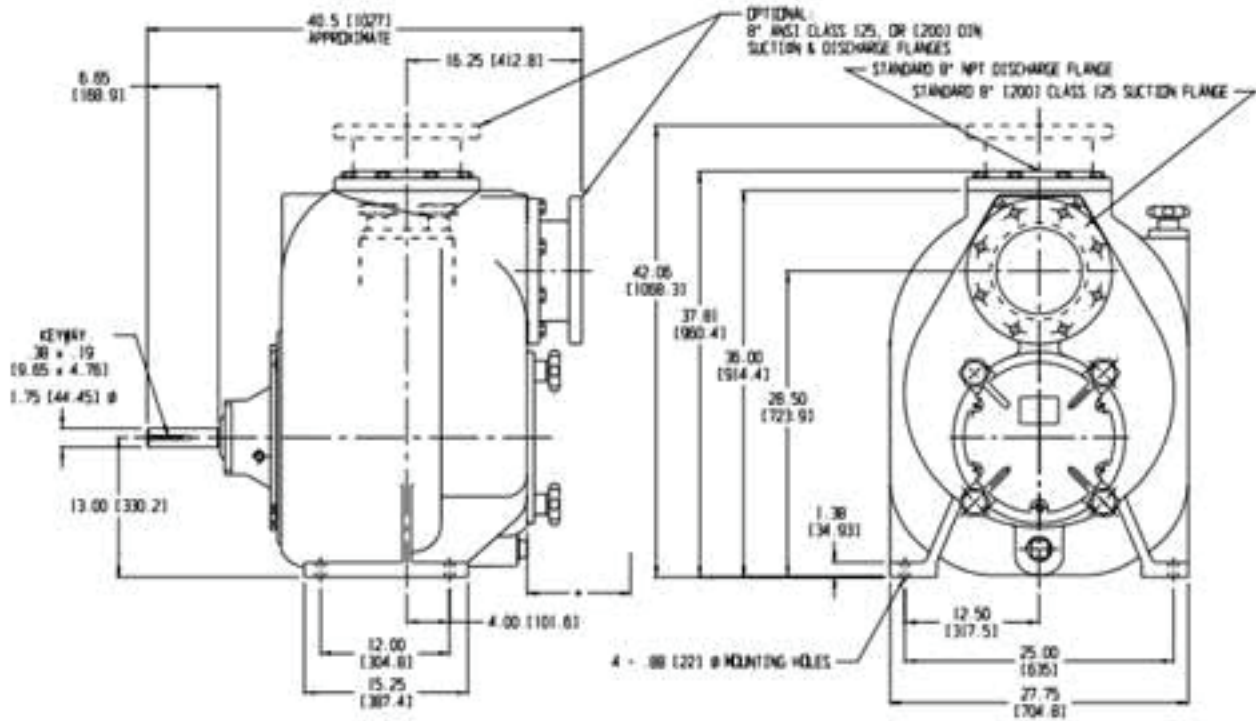
	DATA SHEET
	NET WEIGHT 581kg (1295lbs)
	SHIPPING WEIGHTS 634kg (1399lbs)
	IMPELLER DIA. 374.65mm (14.3/4")
	R.P.M. FROM 650 rpm TO 1350rpm
	MAX. SOLIDS 76.2mm(3")
	SELF-PRIMING
	650 RPM 2.7m (9ft) - 750 rpm 3.7m (12ft)
	850 RPM 4.6m (15ft) - 950 rpm 5.2m (17ft)
	1050 RPM 6.1m (20ft) - 1150 rpm 6.4m (21ft)
1250 RPM 6.7m (22ft) - 1350 rpm 7.0m (23ft)	
BEFORE USING THIS TABLE,CHECK THE NPSH.	





MATERIALS OF CONSTRUCTION								
COMPONENT	STD	CI/316SS	CI/CD4MCU	CI/ADI	CI/HCI	ADI	316SS	CD4MCU
Casing		A48CL30						
Impeller	A60-40-18	316SS	CD4MCU	ADI	HCI	ADI	316SS	CD4MCU
Wear Plate	A48CL30	316SS	CD4MCU	ADI	HCI	ADI	316SS	CD4MCU
Cover Plate		A48CL30				ADI	316SS	CD4MCU
Bearing Housing		A48CL30				ADI	316SS	CD4MCU
Seal Plate	A48CL30	316SS	CD4MCU	ADI	HCI	ADI	316SS	CD4MCU
Flap Valve		NEOPRENE					VITON	
Impeller Shaft	ANSI4140HT		ANSI17-4PH					
Seal Sleeve	ANSI4140HT		ANSI17-4PH					
Flanges		A48CL30				ADI	316SS	CD4MCU
O-rings		BUNA					VITON	
Mechanical Seal		316SS,BUNA,TUNGS/TITANIUM CARBIDE				316SS,VITON,TUNGS/TITANIUM CARBIDE		